

CI/SfB	(31)	Zt4
CAW P10		
Uniclass L675:P91		

### Description

TP601 is a weather-retardant, impregnated, open-cell, polyurethane soft foam, enclosed before use in a polypropylene film with a bonding adhesive on one side for fixing.

### Colour

Foam sealing tape – available in anthracite as standard (grey available on request).

Encapsulating film – clear

Adhesive release film – red

### Packaging

Continuous spool 50 m, 100 m or 200 m depending on size

### Dimensions

Nominal Joint Width (mm)	Maximum Joint Width* (mm)	Metres / Carton
3	7	50
3	7	200
5	10	50
5	10	200
7	12	50
7	12	100

Minimum installation depth = 17 mm

Width of tape = 15 mm + tear off strip

\*To ensure 600 Pa driving rain resistance

### Technical Information

Property	Test Method	Result
Construction Class	DIN 4102	B2
Standard		
Construction Material Compatibility	DIN 52453	Compatible
Film Thickness		30 +/-5 µ
Driving Rain Resistance	EN1027	600 Pa minimum
Water Vapour Permeability		sd value <0.5 m
Application Temperature		The tape should be applied to the window frame before installation at temperatures above +10°C to ensure satisfactory adhesive tack.
Service Temperature		-30°C to +90°C
UV Resistance	The polypropylene activation film must be removed within 3 months of installation otherwise this may be difficult to remove.	
Storage	Store rolls horizontally and in original carton between +0°C and +20°C in dry conditions and away from direct sunlight.	
Shelf Life	18 months when stored as recommended in original unopened containers.	



## TP601

### Compriband e

#### Usage / Purpose

TP601 is an impregnated, pre-compressed foam sealing tape, encapsulated before use in a tear-off, polypropylene film with a bonding adhesive on one side for installation. The tape is intended for the external, recessed perimeter sealing of windows and doors with the same high performance characteristics as TP600. The tear-off, encapsulating film permits the post-installation expansion of the foam strip, thus ensuring an effective weather seal.

#### Key Benefits

- Factory or site application with activation within 3 months of installation
- 600 Pa weather resistance
- Applied before frame installation
- No hazardous waste or clean up

### Preparation

No special surface preparation or primers are required but contact surfaces must be clean of dust, dirt, loose matter, grease or oils.

### Application

- Prior to installation, TP601 is fixed to the frame by means of the self-adhesive strip.
- Measure the size of the aperture, not the frame, and cut the TP601 to length, allowing an extra 10 mm per metre to form a good tight fit between the end of the tape and the wall/reveal.
- It is preferable to install the horizontal edges first. Fit the tape to the top and bottom of the frame. The tape should be set back into the joint by 2-3mm in order to protect from UV and enhance stability. Then measure the vertical distance of the frame between the horizontal tapes, again allowing 10 mm per metre oversize to form a good, tight butt joint at the corners.
- Apply the tape in line with the top and bottom seals.
- NOTE: Creases in the filmic adhesive support may provide tracking points for moisture ingress. The product should be applied under minimal but sufficient tension to remove any such creases at application. This will ensure that intimate and close contact with the substrate is made.
- During installation of the frame, ensure that the tear-off strip is externally accessible. When ready to activate the tape, remove the film by carefully tearing at the metal perforation strip, ensuring that this is also removed. Continue pulling the film at an angle of 45° to the adhesive surface (as shown in Fig 3) and supporting the tape by pressing close to the point of tearing. Take care not to disturb the corner butt joints. This action will cause the strip to tear freely along the perforation line. The activated seal will now quickly expand to seal the joint.
- Please be aware that a small residual visual edge of film will remain after the main encapsulation is removed.
- It is essential to remove the tear-off activation/encapsulating film within 3 months of application otherwise this may prove difficult due to UV degradation.

### Please Note

In order that driving rain resistance is maintained to a minimum of 600 Pa, it is essential that the maximum recommended joint width is not exceeded. To ensure that irregularities can be sealed by the tape, aperture surfaces must not be excessively rough.

The information provided herein represents general guidance only. The user is advised to conduct trials to establish suitability for his particular application.

### Technical Service

Tremco CPG UK Limited has a team of experienced Technical Sales Representatives who provide assistance in the selection and specification of products. For more detailed information, service and advice, please call Customer Services on 01942 251400.

### Guarantee / Warranty

Tremco CPG UK Limited products are manufactured to rigid standards of quality. Any product which has been applied (a) in

accordance with Tremco CPG UK Limited written instructions and (b) in any application recommended by Tremco CPG UK Limited, but which is proved to be defective, will be replaced free of charge. No liability can be accepted for the information provided in this leaflet although it is published in good faith and believed to be correct. Tremco CPG UK Limited reserves the right to alter product specifications without prior notice, in line with Company policy of continuous development and improvement.



**Tremco CPG UK Limited**  
Coupland Road  
Hindley Green, Wigan WN2 4HT  
United Kingdom  
T: +44 1942 251400  
F: +44 1942 251410

info.uk@tremcocpg.com  
www.tremcocpg.eu

### Health & Safety Precautions

Safety data sheet must be read and understood before use.

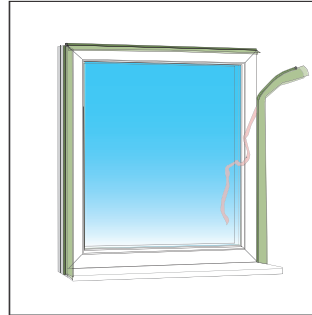


Fig 1:  
Bond TP601 to the edge of the window frame using the self-adhesive strip.

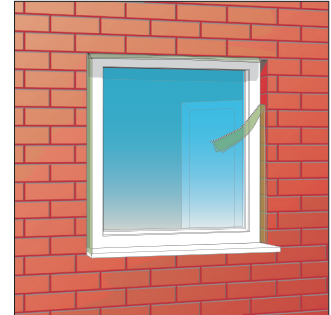


Fig 2:  
Activate the expansion of the tape by removing the tear-off film and thread.

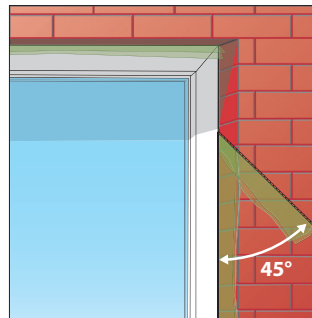


Fig 3:  
Pull the film carefully at an angle of 45°.

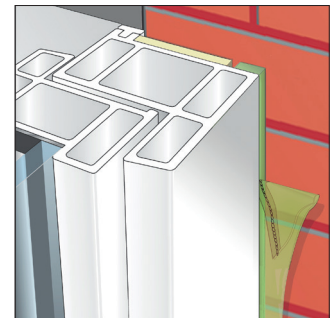


Fig 4:  
TP601 located between window and reveal.

